



THE RITZ-CARLTON

SHANGHAI, PUDONG



UNIQUE SELLING POINTS

- Centered in Shanghai financial district, Lujiazui Finance and Trade Zone
- Pudong's premier lifestyle address – Shanghai ifc, a luxurious integrated retail, office, hotel and residential complex, the first in Pudong Shanghai
- Contemporary design with an Art Deco effect
- Entry room type starts at generous size 50 sq m
- The Ritz-Carlton Spa offer 10 beautifully appointed treatment rooms with breathtaking view of the Bund and Huangpu River
- Unique dining experiences including an outdoor/indoor rooftop bar on 58th floor
- The second largest ballroom in Pudong, sized at 1,135 sq m, with direct access to an open air terrace
- All function rooms provide natural day light

The Ritz-Carlton Shanghai, Pudong is situated in Pudong's new social and commercial hub, Shanghai ifc, with views over the Bund. It is

Shanghai's Ultimate Destination for Uncompromising Style and Luxury.



THE RITZ-CARLTON



The hotel's interior was designed by Singapore's Richard Farnell; while Flair, our open-air rooftop bar, and Scena, Italian all-day dining restaurant, were designed by Super Potato. Steve Leung designed Jin Xuan, our signature Chinese restaurant.

Atop an ultra-modern, 58 storey skyscraper in the heart of Shanghai's Lujiazui Finance and Trade Zone, the 18 floors of the hotel offer breathtaking views of the Bund and the city.

HOTEL ZONING



- 58F FLAIR - Rooftop Bar
- 55F The Ritz-Carlton Spa
- 53F Gym & Swimming Pool
- Jin Xuan - Chinese Restaurant
- 52F Sky Lobby
- Aura Lounge & Jazz Bar
- Scena - Italian All-day Dining
- 51F The Ritz-Carlton Suite
- 50F Chairman Suite
- 49F The Ritz-Carlton Club Lounge
- 39-51F Guestrooms
- 3F Ballroom & Conference Center
- 1F Arrival Lobby

PORTE COCHERE & FIRST FLOOR LOBBY



THE RITZ-CARLTON

FIRST FLOOR LOBBY



THE RITZ-CARLTON

GUEST ROOMS (39th – 51st Floors)



Our 285 elegant rooms and suites start at generous size of 50 sq m (535 sq ft).

The style is contemporary with a dash of Art Deco, each room offers a breathtaking view of the Bund, Huangpu River, Lujiazui Park, or Pudong,

GUEST ROOMS (39th – 51st Floors)



Deluxe Room

THE RITZ-CARLTON

GUEST ROOMS (39th – 51st Floors)



City lights View Room

GUEST ROOMS (39th – 51st Floors)



Pearl Tower View

THE RITZ-CARLTON

GUEST ROOMS (39th – 51st Floors)



Shanghai Bund View Room

THE RITZ-CARLTON

GUEST ROOMS (39th – 51st Floors)



Studio

THE RITZ-CARLTON

GUEST ROOMS (39th – 51st Floors)



Panoramic Suite

THE RITZ-CARLTON

GUEST ROOMS (39th – 51st Floors)



Pearl Tower View Suite

THE RITZ-CARLTON

GUEST ROOMS (39th – 51st Floors)



Shanghai Bund View Suite

THE RITZ-CARLTON

GUEST ROOMS (39th – 51st Floors)



Premier Bund View Suite – Bedroom Room

THE RITZ-CARLTON

GUEST ROOMS (39th – 51st Floors)



Premier Bund Suite - Living Room

THE RITZ-CARLTON

GUEST ROOMS (39th – 51st Floors)



Chairman Suite

THE RITZ-CARLTON

GUEST ROOMS (39th – 51st Floors)



The Ritz-Carlton Suite - overall

THE RITZ-CARLTON

GUEST ROOMS (39th – 51st Floors)



The Ritz-Carlton Suite – Living Room

GUEST ROOMS (39th – 51st Floors)



The Ritz-Carlton Suite – Master Bedroom & Bathroom

GUEST ROOMS (39th – 51st Floors)



The Ritz-Carlton Suite – Study Room

THE RITZ-CARLTON

ROOMS and SUITES

| | | |
|--------------------------|---------------|----------|
| Deluxe | 50 – 54 sq m | 45 units |
| City Lights View | 50 – 54 sq m | 45 units |
| Pearl Tower View | 50 – 55 sq m | 36 units |
| Shanghai Bund View | 50 – 56 sq m | 49 units |
| Club Deluxe | 50 sq m | 34 units |
| Studio | 51 - 54 sq m | 5 units |
| Club Studio | 51 - 54 sq m | 5 units |
| Club Bund | 50 – 56 sq m | 14 units |
| Panoramic Suite | 92 - 108 sq m | 9 units |
| Club Panoramic Suite | 92 - 108 sq m | 3 units |
| Pearl Tower View Suite | 74 sq m | 10 units |
| Shanghai Bund View Suite | 65 - 88 sq m | 16 units |
| Premier Bund View Suite | 88 - 98 sq m | 10 units |
| Carlton Suite | 108 sq m | 2 units |
| Chairman Suite | 410 sq m | 1 unit |
| The Ritz-Carlton Suite | 410 sq m | 1 unit |

RITZ-CARLTON CLUB LOUNGE (49th Floor)



Each club room and suite will have access to the hotel's stunning **Club Lounge** on the 49th floor. This space, with uninterrupted views of The Bund, will be an ideal place to work, meet or relax at any time of the day with a variety of complimentary food and beverage servings in contemporary, elegant surroundings. The Lounge is opened 24 hours. Also available are two meeting rooms and PC stations.

THE RITZ-CARLTON

SKY LOBBY (52nd Floor)



THE RITZ-CARLTON

SKY LOBBY (52nd Floor)



The lobby level of the hotel is situated on the 52nd floor and features the **Sky Lobby, Aura Lounge & Jazz Bar** and **Scena**, Italian all-day dining restaurant.

The Shop (52nd Floor)



THE RITZ-CARLTON

THE RITZ-CARLTON SPA (55th Floor)



Featuring an opulent, 1,500-square-meter/16,146-square-foot Fitness Center and Spa, the hotel is an ideal escape for leisure and business travelers alike.

The Ritz-Carlton Spa offers the most luxurious spa experience with ESPA and VALMONT products in the city with a variety of beauty treatments and rejuvenating therapies in 10 treatment rooms with sweeping views of Shanghai, including one VIP Spa Suite.

Guests will also enjoy a world-class indoor heated pool, Jacuzzi, steam room and dry sauna on the 53rd level with uninterrupted views of The Bund.

SPA



THE RITZ-CARLTON

SPA



THE RITZ-CARLTON

SPA – Harmony Suite



THE RITZ-CARLTON

SPA – Treatment Room



THE RITZ-CARLTON

Infinity Swimming Pool



THE RITZ-CARLTON

Infinity Swimming Pool



THE RITZ-CARLTON

Vitality Pool



THE RITZ-CARLTON

Fitness Centre



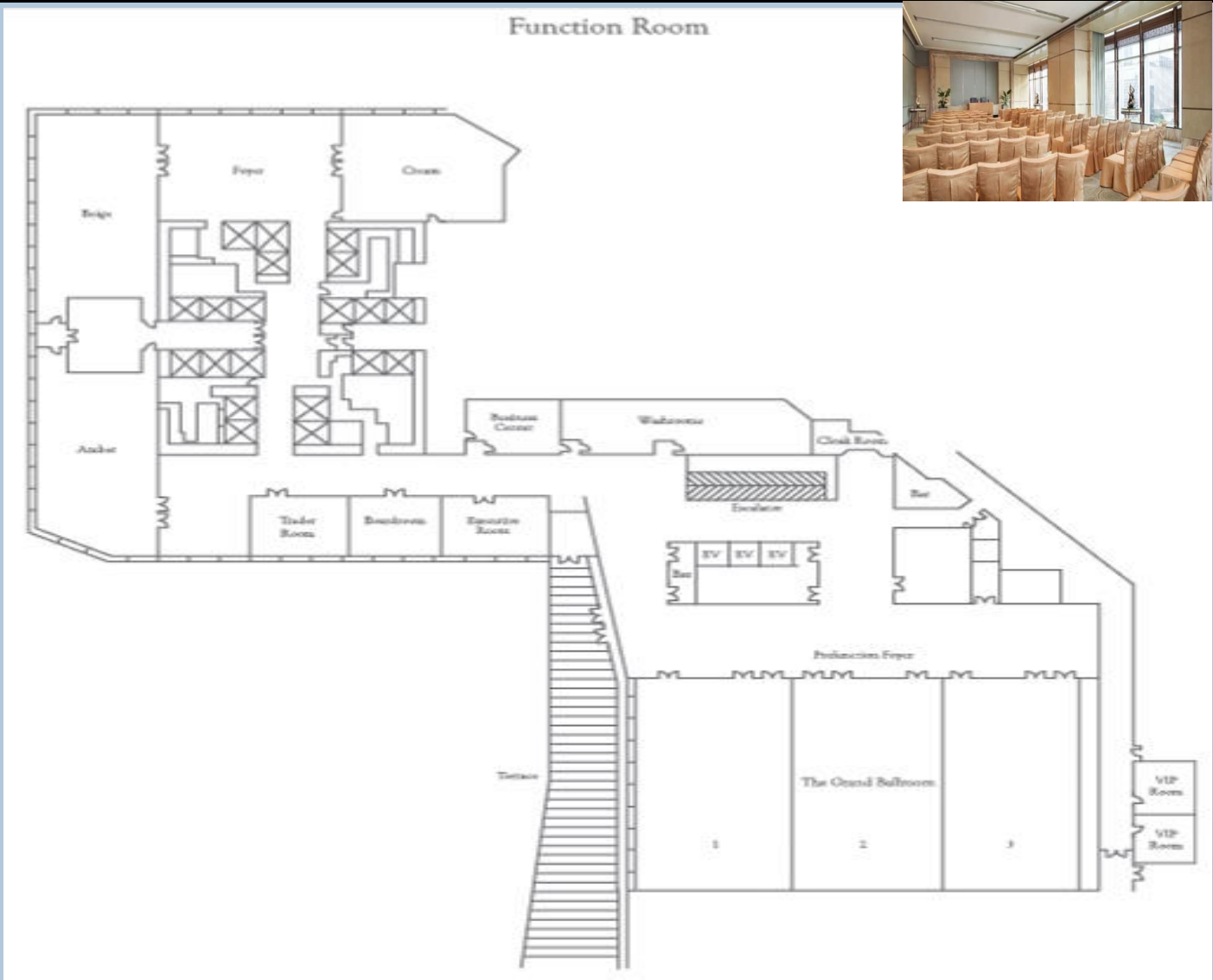
THE RITZ-CARLTON

CONFERENCE



BANQUETING

CONFERENCE AREA FLOOR PLAN (3rd Floor)



CONFERENCE SPACE & CAPACITY CHART

| Meeting Space | Area | | Dimensions | | Ceiling Height | | Banquet Rounds (10pax) | Theater | Reception | Classroom | U-Shape | Hollow Square |
|--------------------|-------------|---------------|------------|---------|----------------|--------|---|---------|-----------|-----------|---------|---------------|
| | Square Feet | Square Meters | Feet | Meters | Feet | Meters | | | | | | |
| The Grand Ballroom | 12,200 | 1,135 | 138 x 89 | 42 x 27 | 24.27 | 7.4 | 700 | 1188 | 1200 | 648 | 111 | 156 |
| Ballroom 1 | 4,357.16 | 405 | 50 x 89 | 15 x 27 | 24.27 | 7.4 | 270 | 400 | 400 | 252 | 78 | 90 |
| Ballroom 2 | 3,921.43 | 365 | 45 x 89 | 14 x 27 | 24.27 | 7.4 | 240 | 360 | 360 | 216 | 75 | 84 |
| Ballroom 3 | 3,921.43 | 365 | 45 x 89 | 14 x 27 | 24.27 | 7.4 | 240 | 360 | 360 | 216 | 75 | 84 |
| Ballroom 1+2 | 8,278.58 | 770 | 95 x 89 | 29 x 27 | 24.27 | 7.4 | 540 | 740 | 750 | 468 | 99 | 132 |
| Ballroom 2+3 | 7,842.87 | 730 | 90 x 89 | 28 x 27 | 24.27 | 7.4 | 480 | 720 | 720 | 432 | 90 | 126 |
| Ballroom Foyer | 4,357.15 | 405 | 148 x 30 | 45 x 9 | 15.41 | 4.7 | --- | --- | 430 | --- | --- | --- |
| Amber | 2,461.37 | 230 | 72 x 34 | 22 x 11 | 15.41 | 4.7 | 120 | 220 | 240 | 120 | 57 | 66 |
| Beige | 2,130.16 | 198 | 59 x 36 | 18 x 11 | 15.41 | 4.7 | 120 | 210 | 208 | 120 | 57 | 66 |
| Cream | 1,822.56 | 170 | 44 x 41 | 14 x 12 | 15.41 | 4.7 | 80 | 170 | 180 | 72 | 30 | 42 |
| Meeting Room Foyer | 1,703.89 | 158 | 40 x 43 | 12 x 13 | 15.41 | 4.7 | --- | --- | 170 | --- | --- | --- |
| Board Room | 694.67 | 65 | 30 x 23 | 9 x 7 | 15.41 | 4.7 | 董事会议形式容纳12人 Seats 12 persons boardroom style meeting | | | | | |
| Traders Room | 694.67 | 65 | 30 x 23 | 9 x 7 | 15.41 | 4.7 | 24 | 40 | 60 | 24 | 24 | 30 |
| The Executive Room | 979.5 | 91 | 43 x 23 | 13 x 7 | 15.41 | 4.7 | 40 | 90 | 60 | 42 | 30 | 34 |

CONFERENCE FACILITIES



Ample natural light illuminates over 2,600 sq m / 27,300 sq ft of meeting and conference space conveniently located on the 3rd floor with direct access to Shanghai ifc. The Business Center, provides an exclusive conference-concierge and meeting services. The 1,135 sq m / 12,200 sq ft ballroom is divisible into three salons. Four multi-purpose meeting rooms and two boardrooms are equipped with state-of-the-art facilities and can be adapted to meet a wide range of meeting and catering requirements.

THE RITZ-CARLTON

WEDDINGS



Illuminate the dream of a blissful wedding at 7.4 meters high-ceiling Grand Ballroom. Couples can celebrate their nuptials at this serene venue nestled beside a delicate Bridal and Groom VIP room. Dedicated wedding specialists are on hand to collaborate with bride and groom on all aspects of their most memorable day. From menus, linens, floral, venue deco, to photos, videos, make up, invitation designs, ceremony planning as well as wedding dress, a one-stop-shop wedding solution for bride and groom crowning the day with luxury.

THE RITZ-CARLTON

SOCIAL GATHERINGS & SPECIAL OCCASIONS

The Ritz-Carlton's Culinary and Catering teams are dedicated to offering seamless service and creativity in organizing tailor-made themed events, team-building activities, and off-site catering for our guests. Hospitality suites and a rooftop bar offer alternative venues for memorable experiences.



THE RITZ-CARLTON

A row of several empty wine glasses is the central focus, arranged in a line that recedes into the background. The glasses are clear and have a classic shape. The background is softly blurred, showing a window with a view of a landscape and a plate of food on a table. The overall color palette is dominated by light blues and greens, creating a calm and sophisticated atmosphere.

DINING OPTIONS

SCENA



Scena is a 3 meal restaurant offering specialty Italian cuisine in a stylish yet casual environment.

52nd floor (Sky Lobby level)

Total seating:

- Main dining area of 133 seats



SCENA



THE RITZ-CARLTON

AURA LOUNGE & JAZZ BAR (52nd Floor)



Elegant service in a modern and relaxing setting - Aura lounge offers afternoon tea and coffee during the day. In the evening a sophisticated mature atmosphere with live jazz entertainment emerges.

52nd floor (Sky Lobby level)

Total seating: 130 seats

THE RITZ-CARLTON



AURA LOUNGE & JAZZ BAR (52nd Floor)



THE RITZ-CARLTON

AURA LOUNGE & JAZZ BAR (52nd Floor)



THE RITZ-CARLTON

JIN XUAN 金轩 (53rd Floor)



Jin Xuan

showcases the very best Cantonese traditional cuisine amidst a spectacular décor with superlative warm service.

53rd floor

Total seating:

- Main dining area of 52 seats
- 6 Private Dining Rooms of 64 seats
- 2 VIP Private Dining Rooms of 40 seats



JIN XUAN (53rd Floor)



THE RITZ-CARLTON

JIN XUAN (53rd Floor)



THE RITZ-CARLTON

JIN XUAN (53rd Floor)



THE RITZ-CARLTON

FLAIR (58th Floor)



Flair Rooftop Restaurant & Bar

A very fashionable and cool lifestyle lounge in Shanghai serving Asian tapas & raw seafood bar, Flair is THE place for movers & shakers to entertain.

Rooftop level 58

Total seating:

- Indoor: 92 seats
- Outdoor: 135 seats



THE RITZ-CARLTON

FLAIR



THE RITZ-CARLTON

LET
US
STAY
WITH
YOU

